



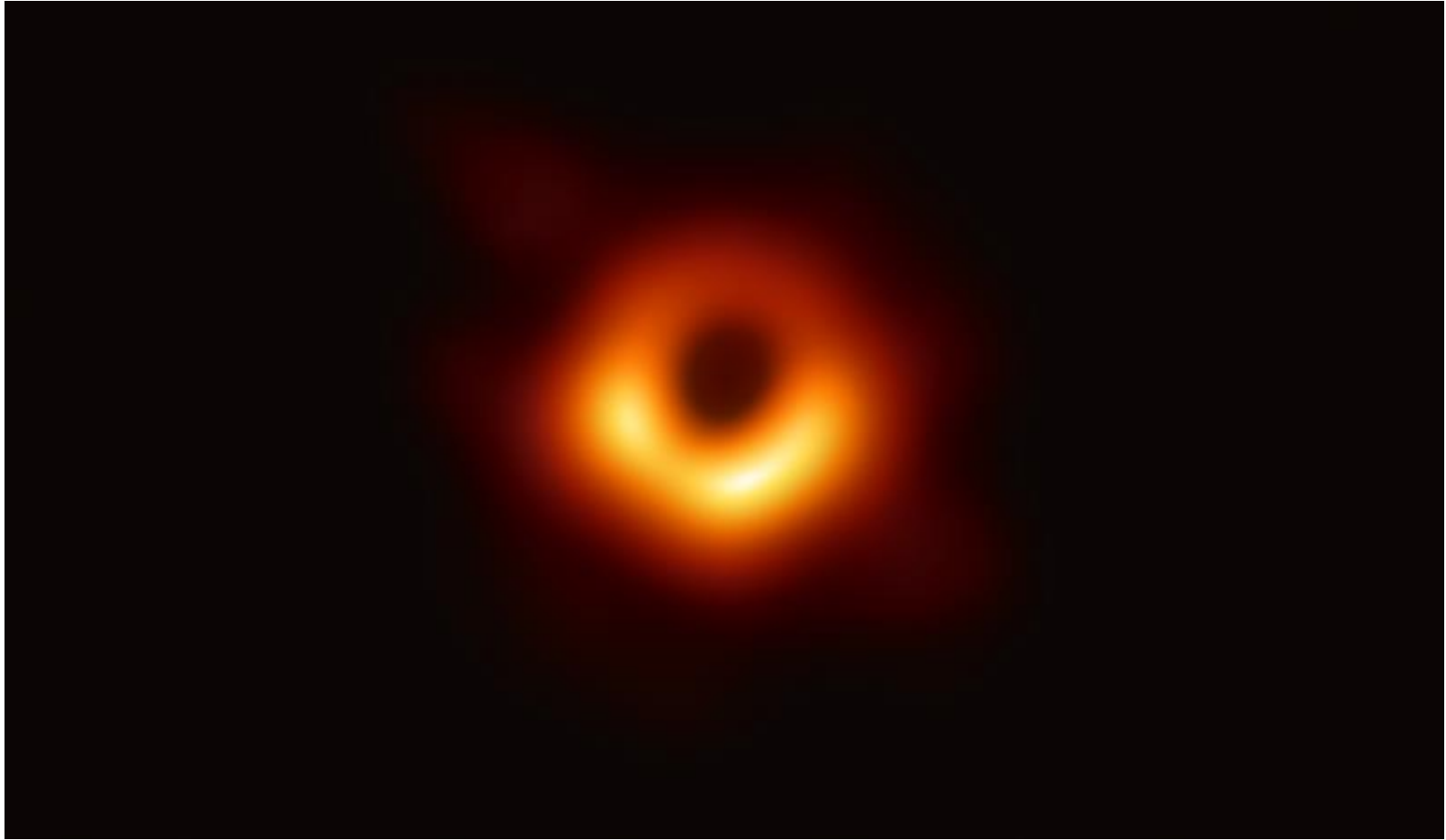
Very Long Baseline Interferometry

Chao-Tsung Huang

**National Tsing Hua University
Department of Electrical Engineering**



First picture of black hole





Distant source



s

Baseline B

x1

x2

x

$$V(r_1, t_1, r_2, t_1) = V(r_1 - r_2) = V(\rho)$$

Spatial coherence between two telescopes

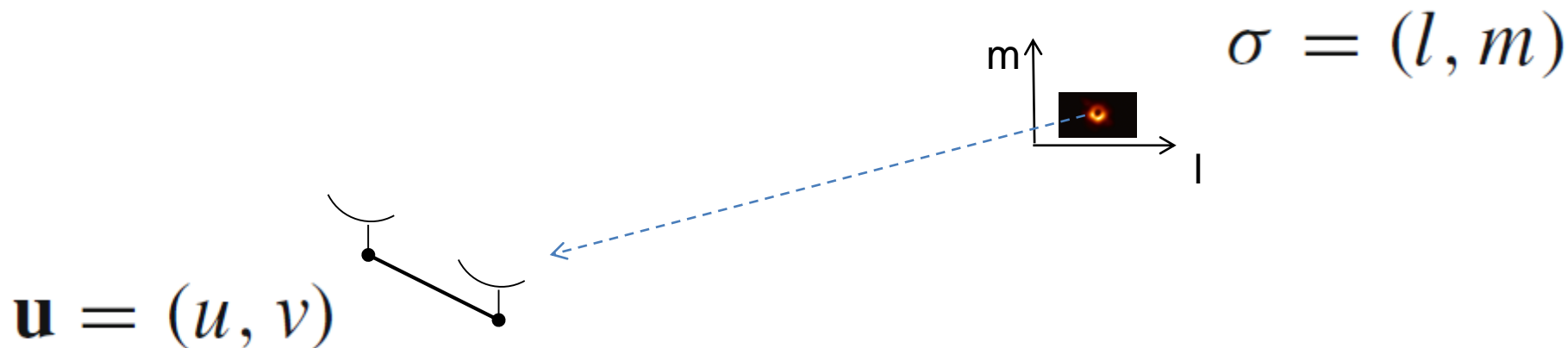
Complex visibility

$$V = \int A(\sigma) I(\sigma) e^{-\frac{2\pi i}{\lambda} \mathbf{B} \cdot \sigma} d\Omega$$

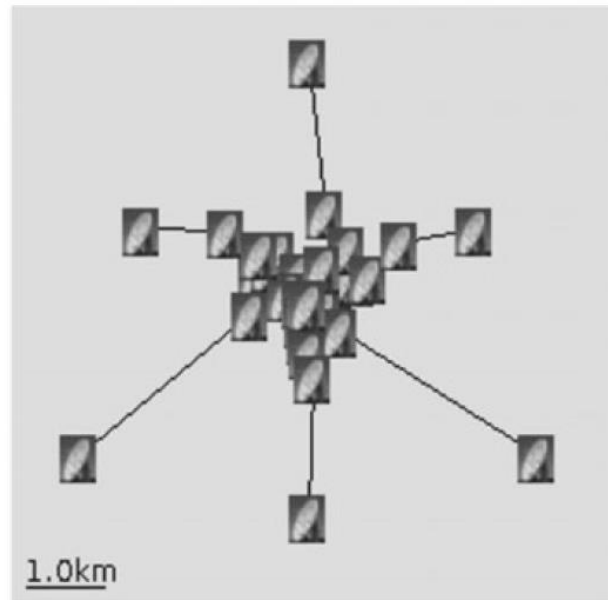
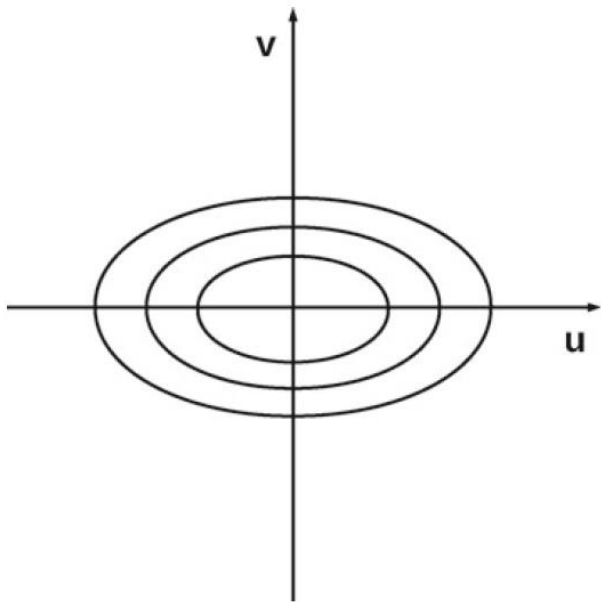


Visibility of each pair of baseline contributes a DFT coefficient

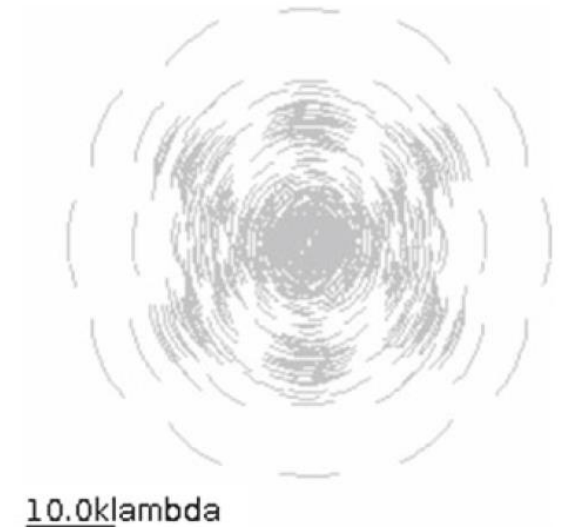
$$\hat{V}(u, v) = \int_{l, m} A(l, m) I(l, m) e^{-2\pi i (ul + vm)} dl dm$$



Aperture synthesis



Antenna array



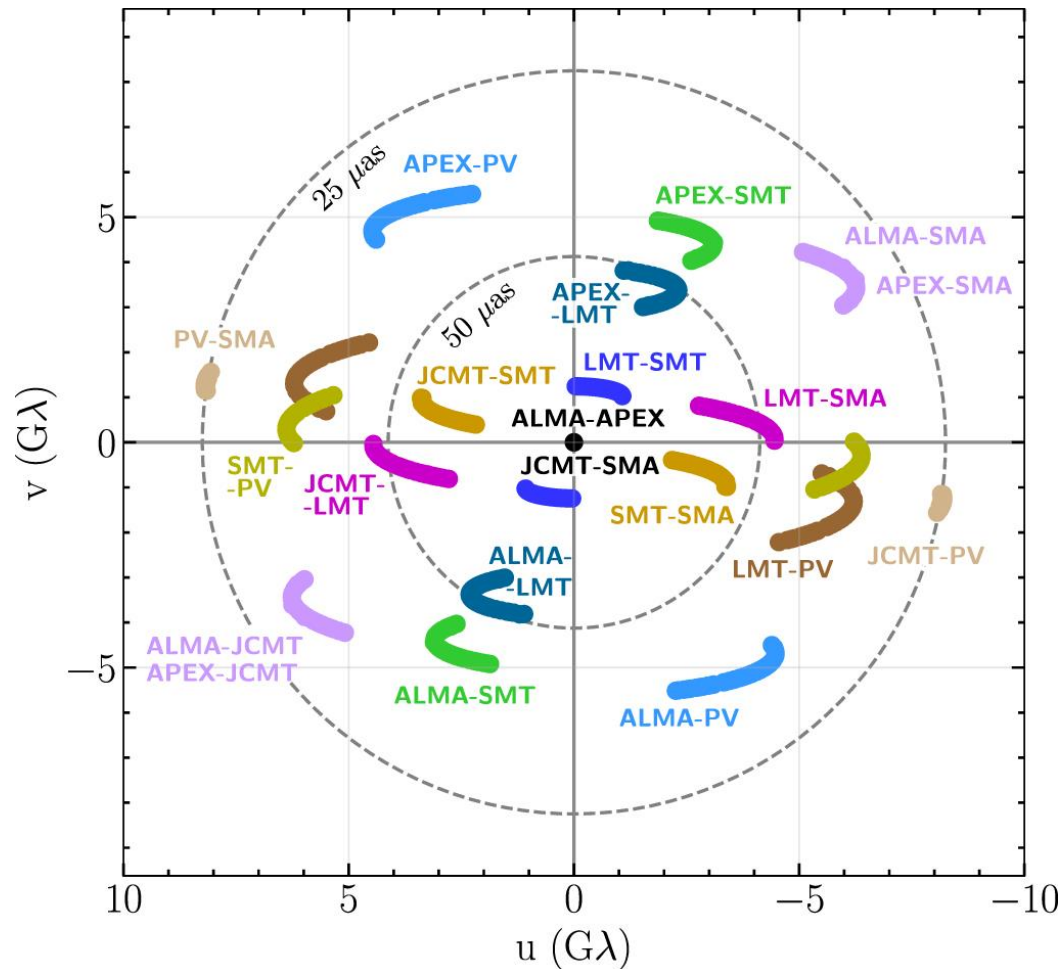
u, v coverage
(**spatial frequency** of the
image)

The Event Horizon Telescope

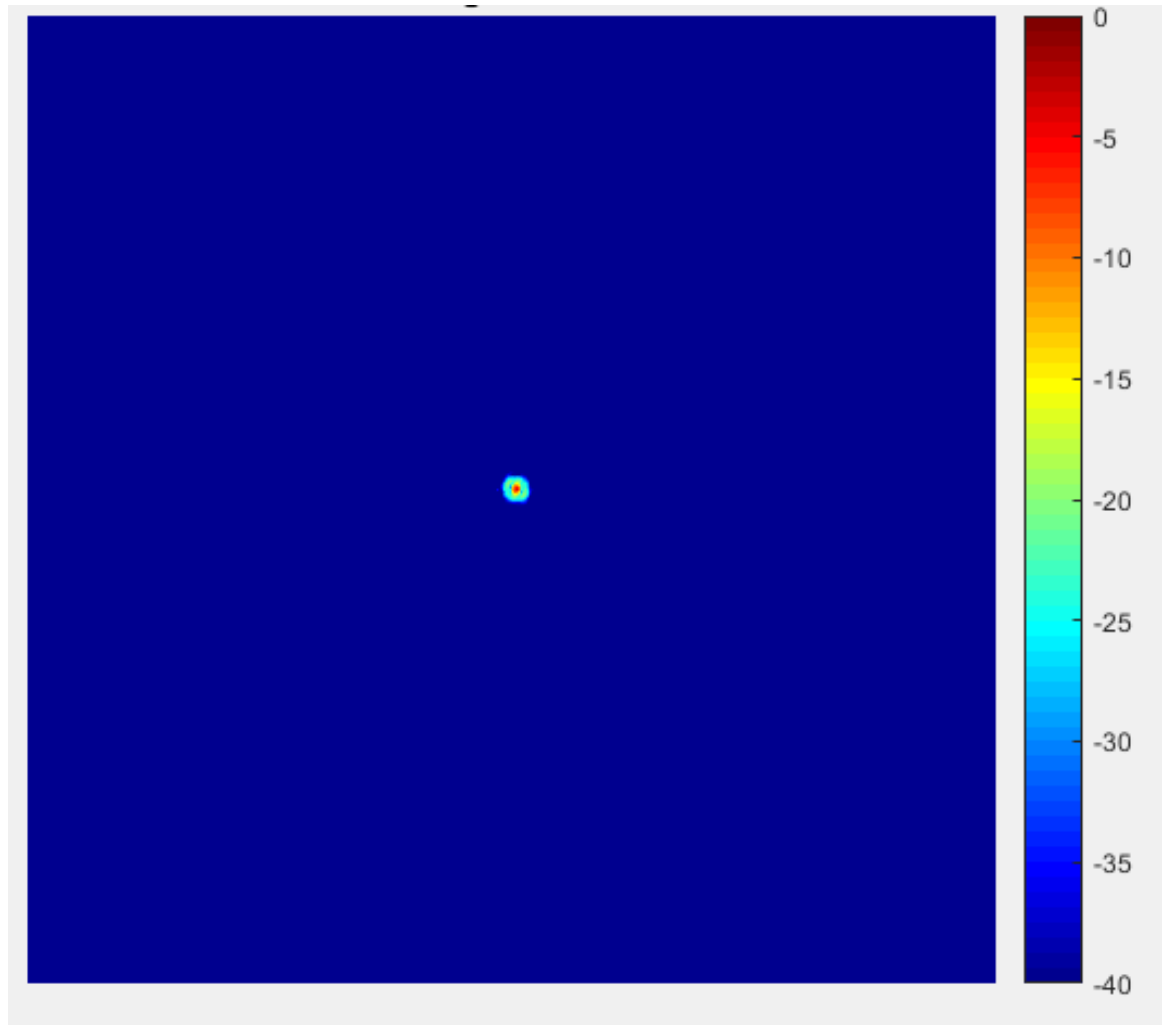




Use algorithm to fill DFT holes ...

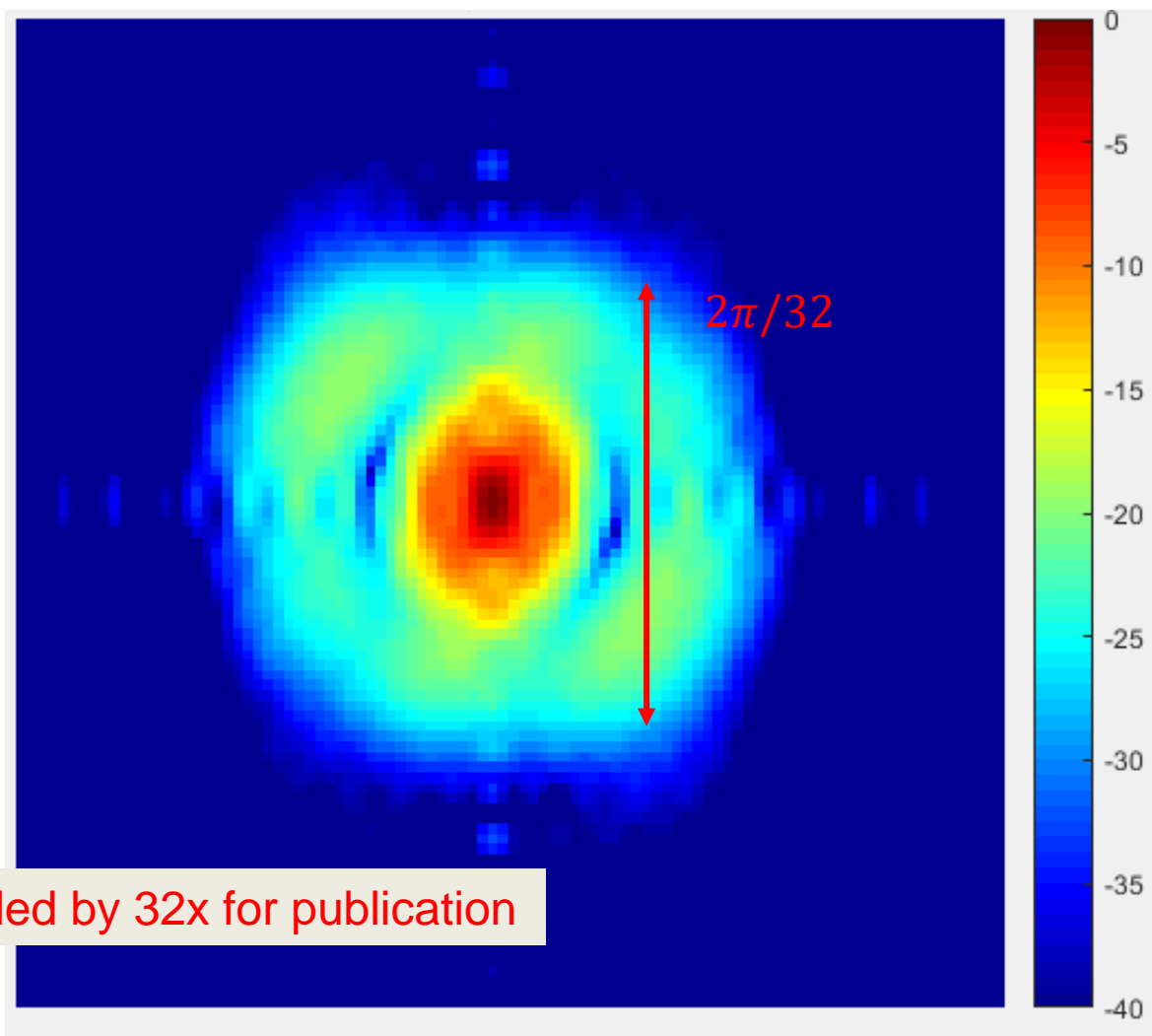


DFT analysis on M87 image



Insufficient
baseline for a
clear image

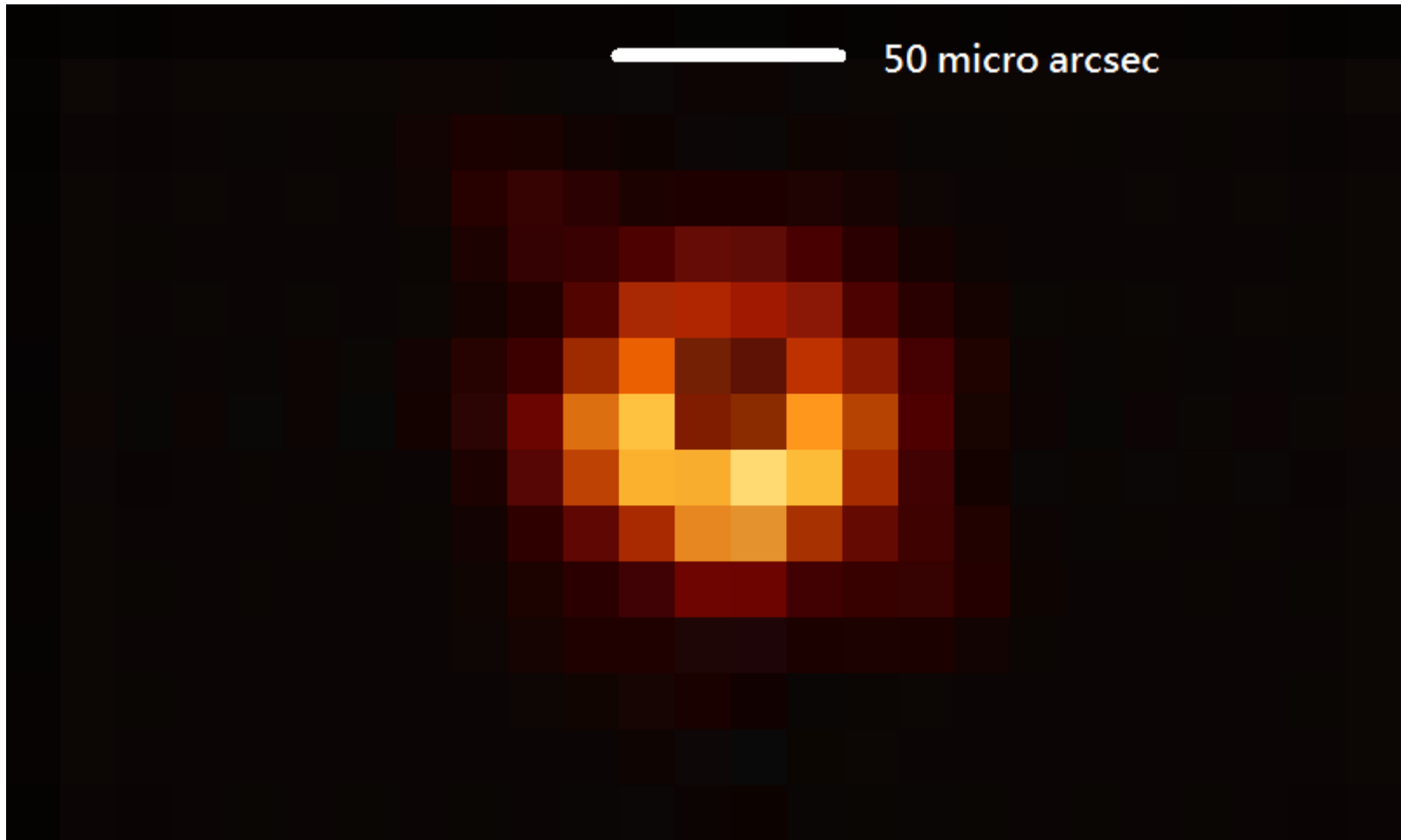
DFT analysis on M87 image



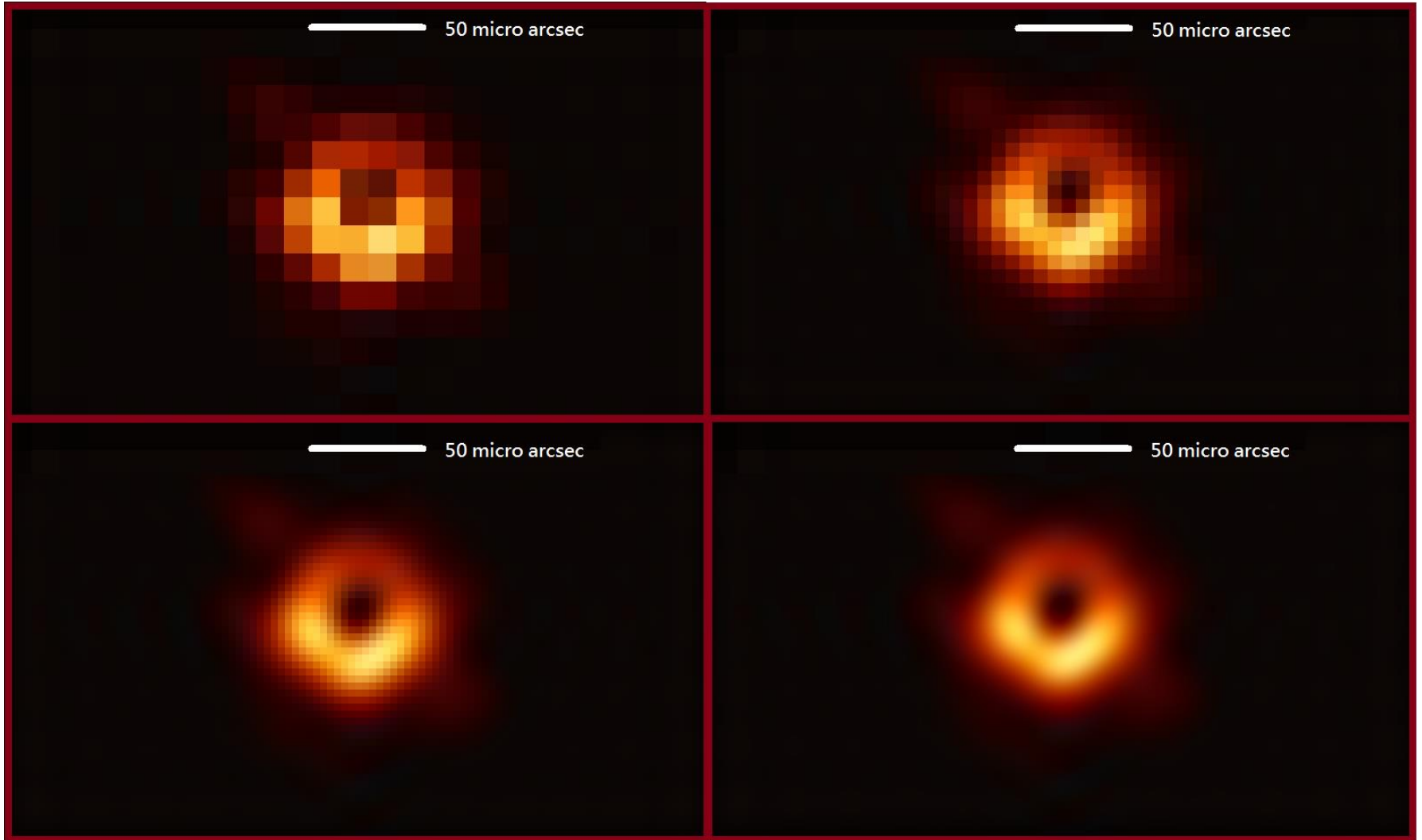
The image is scaled by 32x for publication



The “real” black hole image



Each image contains “the same” information



Use algorithm to fill DFT holes ...

